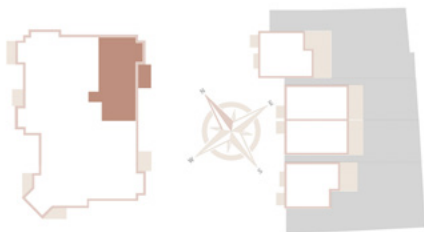
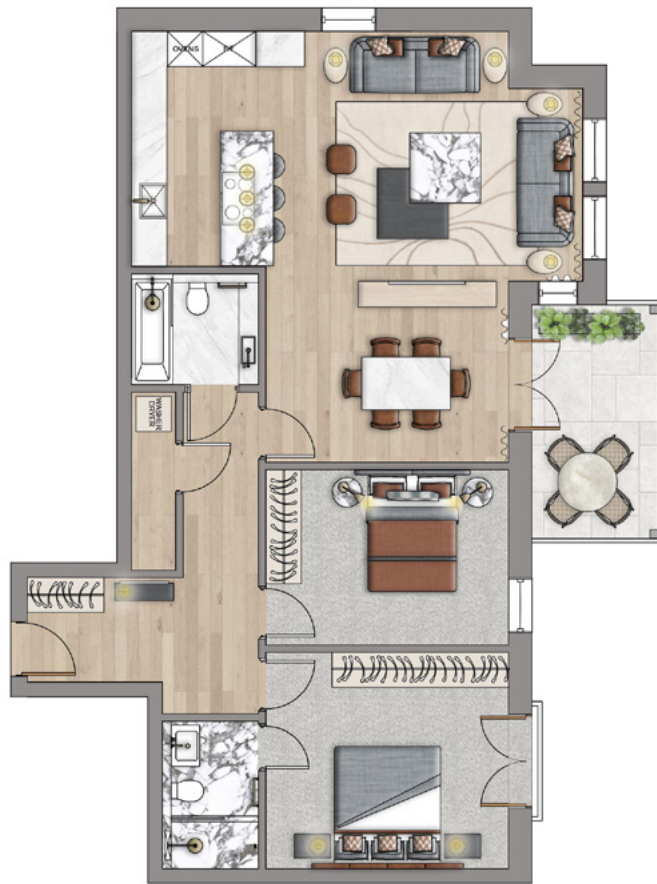


Apartment NINE

97 Sqm | 1044 Sqft

Open Plan Kitchen	7.6m x 7.4m	Master Bedroom	4.1m x 3.7m
Utility & Store	3.0m x 0.8m	Master Ensuite	2.5m x 1.6m
Balcony	4.0m x 2.1m	Bedroom Two	4.1m x 3.0m
Family Bathroom	2.2m x 1.9m		



FIRST FLOOR



SIXTEEN APARTMENTS FOR LUXURY LIVING

- Arrive through an impressive 4.5m external canopy for you and your guests
- Enter into an impressive entrance hall with an oversized feature fireplace and an open staircase sweeping over three floors, bathed in natural light from a sky light
- Each floor will have access to its own hotel style trolley for transport of luggage and other items
- A beautifully designed large lift will be available for convenience
- Each apartment will have its own private underground secure parking space with its own electric charging point
- Each apartment will be able to use their own dedicated 3x2m storage unit in the underground parking area with power and light
- Ceiling heights of 2.7m in all apartments
- All apartments benefit from a share of freehold
- A 999 year lease in place for all apartment owners
- Owners have the benefit of no ground rents
- Ground floor apartments all have private enclosed gardens or large terraces
- Upper floor apartments all benefit from walk-on terraces
- Small pets allowed

